

Siamou

Burkina Faso

Physical Exertion: MODERATE
Resources: LIMITED
Threat Level: LOW
Freedom: SOMEWHAT RESTRICTED



SUMMARY

20,000 population, mixture of Folk Islam and African traditional religion, remote locations.

DETAILS

Who are they? The Siamou have an estimated population of 20,000. They are agriculturalists.

What is their primary religion? Folk Islam mixed with African traditional religion.

Where are they? The Siamou can be found in the villages of Tin, Orodara, Ledara, Bandougou, and Diossogou.

Do they have a Christian witness? There are approximately 500 Christians among the Siamou. Mennonite missionaries are doing Bible translation but have no church planting strategies in place for reaching the Siamou.

What strategies are being implemented for reaching this people group? None.

Suggestions and rationale for engaging this people group: An Engaging Church from the U.S.A. could begin targeting this people group. This church could work to partner with Burkina Faso churches that might be located in the area. Because there are some Christians among the Siamou, these could be disciplined and encouraged to reach out to their own people.

What specific challenges or opportunities could directly affect the engagement of this people group?

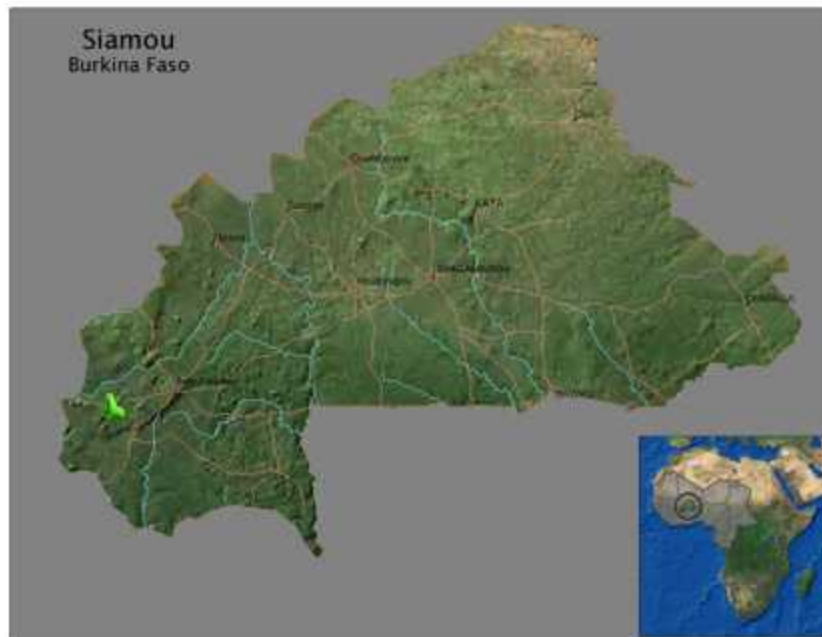
- Teams would have primitive living conditions.
- The Siamou are reluctant to turn from their traditions to Christ.
- The Siamou are very proud of their language and might resist work being done in another language.

Specific Opportunities/Benefits:

- Bible translation is in progress.
- The Siamou villages are fairly accessible.

For further information about this people, contact:
David and Tami Wood engage@thetask.com

www.gowestafrica.org



Carrying Living Water to a Thirsty People

